



Bou-Matic EZ-Sort

Automated cow sorting system

The Bou-Matic EZ-Sort gate is a stand-alone cow sorting system designed to work in any parlor configuration. The EZ-Sort gate simplifies and automates the process of sorting cows from the herd.

If a cow needs special attention, the operator/milker can easily attach a catch tag to the cow's leg while still in the parlor. As the cow leaves the parlor, the EZ-Sort gate will automatically direct the cow to a special needs area.

Reasons for Sorting:

- Lot/Pen Changes
- Reproduction
- Milk Production groupings
- Pregnancy check
- Herd Health
- Dry off
- Hoof trimming
- Any Management sorting decision

The EZ-Sort gate pays for itself by allowing the milker/operator to stay in the parlor, focusing the milker's attention on excellent milking procedures. There's no distraction of having to physically leave the parlor to sort a cow from the herd. The EZ-Sort gate lessens the stress for cow and milker while increasing efficiency, labor savings and profitability.

The EZ-Sort system includes: Sort gate, ID antenna, controller, and electronic catch tags. When a cow needs to be separated from the herd, the milker simply attaches an electronic catch tag to the cows rear leg. Then, as the cow leaves the parlor, she is effortlessly identified by the ID controller and is efficiently sorted into a special needs area or lane.

Most sorting systems require you to have a herd management system and an ID tag on every cow. Bou-Matic's EZ-Sort system is stand-alone and can be adapted to work

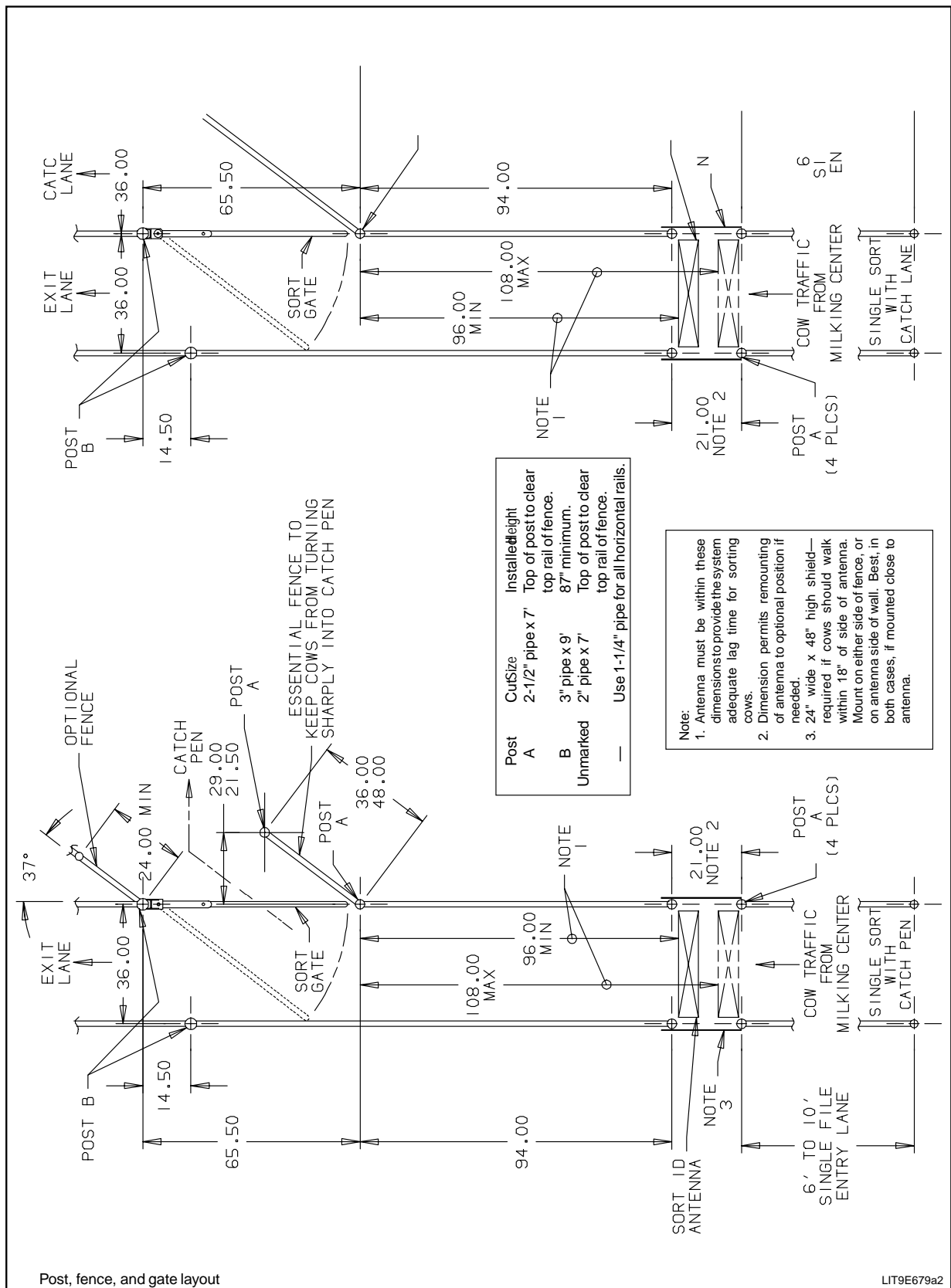
- Efficient
- Saves Time and Labor
- Automatic
- Easy to sort while standing in Parlor
- Fits an array of parlor designs, regardless of manufacturer



in a variety of holding area designs. The only cows needing a tag are those that need to be sorted at that time, reducing costs dramatically. Typically, the EZ-Sort gate is located in the return lane as cow's exit the milking parlor, one per return lane.



Typical Dimensions of an EZ-Sort System



Worldwide Locations:

Global Headquarters
 1919 S. Stoughton Rd.
 P.O. Box 8050
 Madison, WI 53708, U.S.A.
 Telephone (1) 608-222-3484
 Fax (1) 608-222-9314

Bou-Matic Australia
 10 McPherson Street
 Leongatha, Victoria
 Australia, 3953
 Telephone (61) 356-624465
 Fax (61) 356-624469

Bou-Matic Europe
 2 - 4, rue de la Plaine
 78860 Saint-Nom-La-Bretèche
 France
 Téléphone (33) 1-30-80-43-43
 Fax (33) 1-30-80-43-50

Bou-Matic UK
 Smithfield Works
 Brownlow Road
 Ellesmere, Shropshire, England
 Telephone (44) 691-624-642
 Fax (44) 691-624-884

InterAg/Bou-Matic
 558 Te Rapa Road
 P.O. Box 20055
 Hamilton, New Zealand
 Telephone (64) 7-849-8755
 Fax (64) 7-849-0164