

Slant-60 Parabone

A new “slant” on proven technology

The Slant-60 Parabone combines the best of herringbone and parallel stalls in an economical parlor solution for dairy producers. With compact 30-inch stall spacing for efficient space usage, and parallel-stall-style udder presentation for safe, efficient milking between the rear legs.

The Slant-60 features:

- Compact 30” stall spacing - Provides efficient space utilization and excellent udder presentation for safe, efficient milking between rear legs. Narrower stalls often constrict rear leg placement making it difficult to milk between the rear legs
- Cow-friendly contour rump panel - Available in stainless or galvanized steel.
- Hot dip galvanized construction - Steel is immersed in 600F degree galvanizing vat where protective zinc penetrates into the steel to provide superior rust protection
- Adjustable brisket rail placement - Telescoping brisket rail support arms and rump rail support arches enable “custom fit” installation
- Bolt together construction - Enables quick, economical installation and eliminates the potential for rusting around welds
- Configurable to meet your needs and budget - Available with stationary or indexing brisket rails and manually operated or air operated entrance and exit gates.

Whether you’re retrofitting an existing parlor, or installing a new one, it’s impossible to beat the value that’s built into the Bou-Matic Slant 60 Parabone. It’s an economical, easy-to-install, durable system that’s engineered for efficiency.

Cows move in and out well and remain comfortable. At the same time the Slant 60 Parabone, is an excellent design for easier access for the milking unit placement for milkers.



The Slant 60 Parabone from Bou-Matic offers flexibility and long-lasting hot dipped galvanized construction that’s the answer for many parlor settings.

Grow with
BOUMATIC
www.Bou-Matic.com



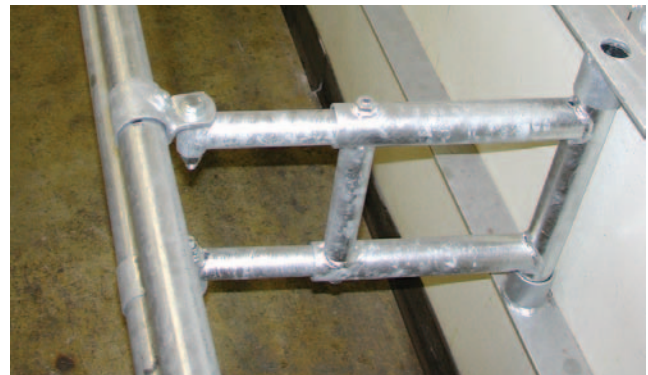
Stationary brisket rail



Indexing brisket rail



Telescoping, adjustable gate mounting bracket



Telescoping, Adjustable rail bracket



Telescoping, adjustable arch support